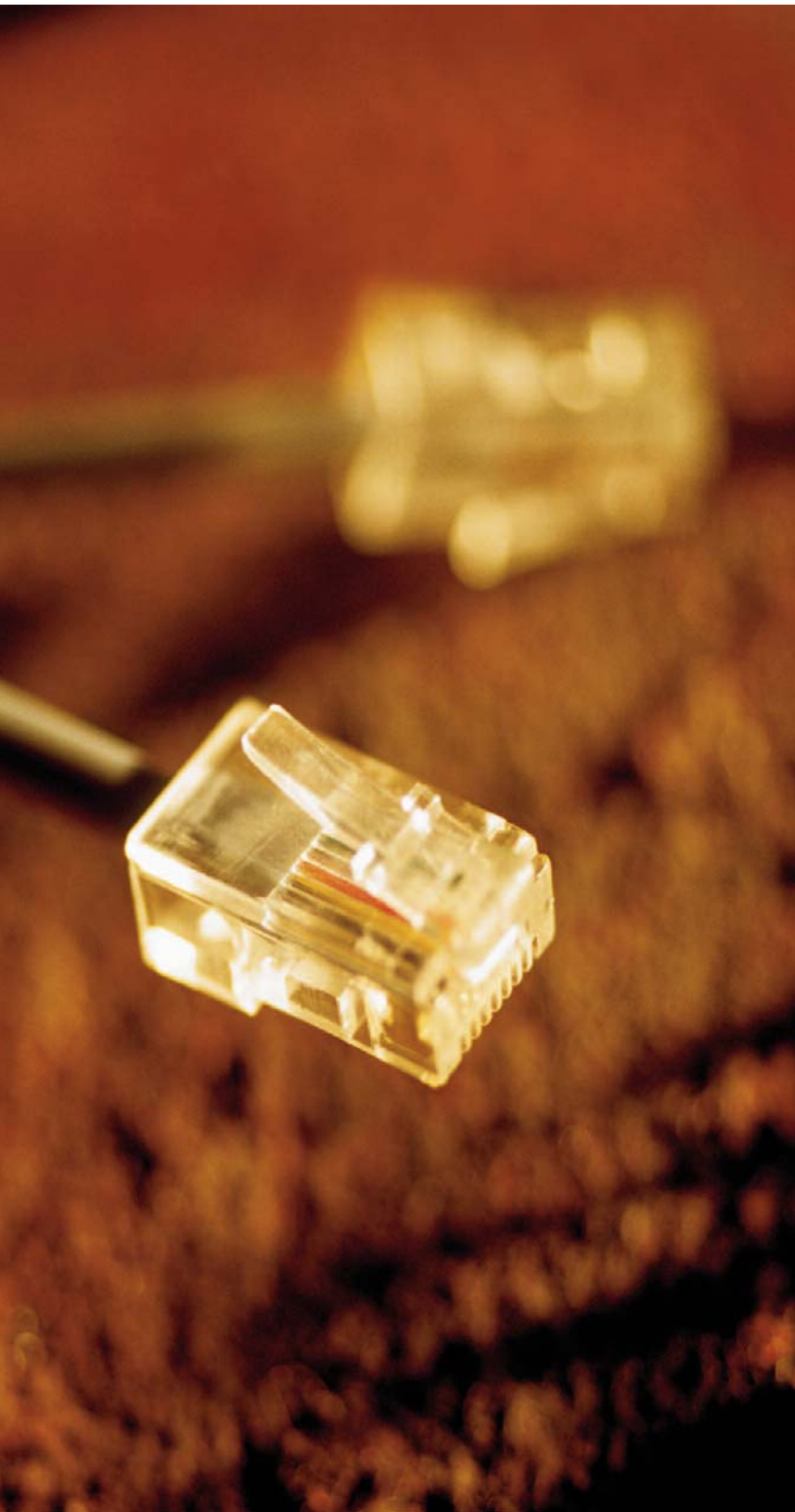




iSECUREtrac Passive GPS



Landline or Cellular Coverage

With iSt Passive GPS, you have a choice of either landline or cellular coverage because:

1. In many households, cellular phones have replaced landline phones as the preferred communication option.
2. Some areas including rural residences, urban trailer parks and/or new residential neighborhoods still under construction may not be wired for traditional phone coverage.
3. Your client may not have the established credit to secure a landline phone.
4. Restrictions placed on landline service (e.g., no call waiting, call forwarding or message service) may be an undue burden on other members of the household.

Wire or wireless, iSECUREtrac's rich stream of location, movement and compliance information helps you monitor and shape more socially responsible and compliant behavior.

User-friendly Software

Built for easy access and usability, iSECUREtrac software is securely accessed 24/7 from most any Internet-ready device, anywhere in the world. In addition to current client location, movement and status, historical data can be leveraged to assist law enforcement in solving criminal investigations.

Supplemental Services

As a complement to agency resources, iSECUREtrac provides a complete array of supplemental services including monitoring center intervention with direct offender contact to reduce agent work load and ensure program objectives are met.





iSt Passive GPS System Features, Benefits and Specifications

<p>PTU</p> 	<p>On-board intelligence: Unassisted location and violation determination</p> <p>Tracking intervals: Multiple times per minute, set at agency request, provides detailed patterns of behavior and movement</p> <p>Tamper evidence: Light sensors automatically record and send violation alerts</p> <p>GPS signal acquisition time: Warm start: 38 seconds Cold start: 45 seconds</p> <p>Accuracy: 3 to 15 feet</p> <p>Communication coverage: Options include largest U.S. cellular carrier as well as traditional landline</p> <p>Reporting frequency: Normal reporting while unit docked and operating in house arrest mode</p> <p>Durability: Made of high density ABS plastic to withstand extreme abrasion, chemical, corrosion, impact and water resistance</p> <p>Client feedback: Protocols and parameters set by supervising officer</p> <p>Dimensions: 6" X 3.25" X 1.75"</p> <p>Weight: 13.2 ounces</p> <p>Battery: 16-18 hours with full charge; recharges automatically while operating in house arrest mode</p>
<p>Transmitter Cuff</p> 	<p>Tamper evidence: Battery removal sensor in housing; optical and conductive strap for continuous tamper sensor</p> <p>Durability: Hypoallergenic, high impact and durable synthetic materials; waterproof</p> <p>Dimensions: 2.5" X 1.75" X 0.9"</p> <p>Weight: 2.6 ounces</p> <p>RF Range: Average 130 – 150 feet</p>
<p>Charging Base</p> 	<p>Tamper evidence: Power sensor</p> <p>Durability: Made of high density ABS plastic</p> <p>Client feedback: Power and charge indicators</p> <p>Phone connectors: 2 standard connectors (type RJ-11)</p> <p>Dimensions: 8.75" X 6" X 3.75"</p> <p>Weight: Less than 2 pounds</p>

For more information on iSECUREtrac systems, software and services contact your iSECUREtrac representative at 866-537-0022 or visit www.isecuretrac.com